



nzsag

New Zealand Society of Artists in Glass Inc.

NZSAG, PO Box 68805, Newton, AUCKLAND

27

Newsletter No 27, 2010

Another New Zealander winner of Ranamok

The winner of the 2010 Ranamok Glass Prize is Sue Hawker from Kerikeri with her exquisite and colourful pâte de verre vase “Too much is never enough”.

The dimensions are 50cm high, 25 cm diameter.

2010 was the second year that Sue had been a finalist but her first win.

Congratulations Sue.

The catalogue of the finalists can be viewed at

<http://www.smartdox.com.au/ranamok/2010/catalogue.html>



Molly Morpeth Canaday Award

The supreme winner of the Molly Morpeth Canaday 3D Glass Award was Lisa Walsh from Waverley in South Taranaki. **Congratulations Lisa.**

Judge Bill Milbank said Walsh’s cast glass piece entitled Welcome Home had an exquisite colour palette and its casting and further working belied its visual simplicity. Mr Milbank said the glass lei evoked a sense of the flotsam and jetsam of the shoreline and it had a real spirit and energy.

Walsh’s piece finally won over a smaller piece entitled Mellifera, which Mr Milbank would have awarded a second prize if there had been one. In this work by Gail Edmonds the judge loved the subtle interplay with kiwiana. This piece was closely followed by Evelyn Dunstan’s piece entitled My Cup Runneth Over – A Touch of the Spring Series (Clematis Chalice #6)

Mr Milbank said there were some “really exciting pieces” among the 24 entries in the award that is organised and hosted by the Whakatane Museum and Gallery. And fortunately his selections, made from photographs, came together into a cohesive exhibition, although some pieces didn’t have the same impression when he saw them in person. When it came to choosing an overall winner Mr Milbank was looking for excellence in crafting, coupled with a good idea behind it. But ultimately, it came down to his personal response and the piece that “wowed” him. The \$5000 award was presented at the exhibition opening at the gallery last night. Sponsored by the Molly Morpeth Canaday Trust, which also funds the annual Molly Morpeth Canaday Art Award that is held in Whakatane in January, the 3D award attracted a good number of entries from around the North Island. The 3D award encourages and recognises the quality of creativity found in the area of applied arts. Since 2007, it has showcased glass design and craftsmanship. Seven of the finalists travelled to Whakatane to attend the opening and prizegiving, along with 15 students from the Whanganui Glass School.

Mr Milbank works as a curator and arts advisor throughout the country and is responsible for establishing WHMilbank Gallery.

NZSAG Conference – Labour Weekend October 22 to 25th, 2010

Conference information is being put onto the NZSAG website (www.nzsag.co.nz) so keep watch. We have put an accommodation listing to help those out of town who want to stay near the conference venue. It might pay to be quick as there is another function on over the weekend.

About now you should have received or will soon be receiving a hard copy of the conference brochure with registration form. It is as accurate as we have been able to make it at this time but as there could still be changes it would be sensible to check on the website as we will add new information there. At this stage we have not finalised the programme but will post it on the web.

The mailout includes registration forms for the Conference, for the Members exhibition and for Workshops. It also includes a promo and order form for New Zealand Glass Art.

The Conference Brochure is also on the NZSAG website.

<http://www.nzsag.co.nz/images/NZSAG%20Conf%20Brochure%202010.pdf>

Speakers

The list of speakers in the hard copy brochure is the list at this time but those who have been onto the NZSAG website will notice that already there has been a change. We originally had Max Stewart, ex Mad Dog Studio, and now of Scotland, down as a speaker and demonstrator on Pâte de verre. Unfortunately Max has hit a snag in that his viva for his PhD has been scheduled in Scotland for the 22nd of October and it cannot be moved. He was most upset having to cancel but that's life. Best wishes to Max for his viva and the completed PhD.

You will also note that we have invited Douglas Lloyd-Jenkins to speak. Many of the society were annoyed at his article in the New Zealand Listener last October but the committee felt that we needed to have him present in person and hopefully hear the views of glass artists.

NZSAG Conference 2010 Billeting

If you an Aucklander and are prepared to billet NZSAG members or overseas speakers over the conference please contact Te Rongo Kirkwood. (email rongo@redroom.co.nz or Mob 021 213 2220) with your interest and any specifics such as gender, number of people etc.

Te Rongo will be the point of contact for all billeting requests so hopefully will be able to match demand with supply.

Billeting seems a good way of meeting other artists as well as helping more people attend.

If you are an out of town artist or NZSAG member who wishes to be billeted please contact Te Rongo Kirkwood. (email rongo@redroom.co.nz or call Mob 021 213 2220) and tell her you preferences. She will try to match you up with appropriate billetors.

Workshops

The number of people who can be accommodated at the workshops is limited and will be filled on a first come first served basis. Be quick.

Elections

An AGM will be held during the conference and as part of the meeting there will be an election to form a new Committee for NZSAG. I encourage people to consider whether they want to be involved in assisting the society to move forward. Although it is easier if all the committee are located near to each other it is not essential. The Ausglass Committee is scattered across Australia and holds a few face to face meetings to complement emails and phone calls to run the organisation. Unless the committee decides to do something outside the norm, like publishing a book, the work load is not onerous. There is definitely more leading up to a conference. If you want to discuss what is involved please feel free to get in touch.

Fiona Rennie Schwieters and Abby Gubay go to Murano

In a state of excitement we arrived in Venice a night early. We booked into the Hotel Principal near the station, which included a trip in a water taxi to Murano and a tour of the Cam factory and furnace. Pulling up to Colonna ferry stop on a hot and sunny Friday morning we could feel the heat and industry buzzing from this Island of glass. We were treated to a display from the hot shop ; a Murano standard of a free-standing horse. The icing pink, green floral and the matt black coral chandeliers float above us. Then into the show room for a tour by Nick, who had been to N.Z. several times and is the only Italian I'd met who was crazy about rugby. This is the workshop of Pino Signoretti and the things he does with glass are mindblowing; size skill color and subject. After an hour or so of drinking in the magic we went to find the Al Soffiador.

We bump our bags past shop windows and galleries feasting our eyes on the glittering delights within. *Grande* public sculpture displayed in each piazza- comet star burst , mirrored madonna. We began to get our bearings: Faro (lighthouse) stop at the end of our street; everything ten minutes walk away.

On Sunday we visited the glass museum Palazzo Giustiniani built in the 15th century from white Istrian stone. Ancient glass from the first to fourth century from Dalmatia bottles urns flasks test tubes plates necklaces. The most interesting to me was the section on how the glass was made. Combining the sands and chemicals to achieve colors. Halved crucibles showing the glass becoming clear with successive firings. The science and the magic.



On Tuesday I met with Matteo Savini from the Abate Zanetti International School of Glass . He looked at my work and asked if I'd like to return in March and teach a casting workshop for 8-10 days. Matteo has recently become Zanettis' program director and is keen to foster links with glass artists from the South Pacific.

I will be teaching the Cera Persa lost wax refractory method kiln cast or furnace poured into open moulds and annealed. The classes would be taught in English with Elena Rosso as my assistant and interpreter . The school runs many classes worth checking out on www.abatezanetti.it.

We are looking for 4 to 6 people who would be interested in this glass casting workshop at the Zanetti school from the 8th March 2011. Please contact me on fionas@pl.net. We are still working on a budget of about 1500 euros for tuition, hotels, walking tours, two dinners, for a ten day program.

Murano is a wonderful experience for anyone interested in glass and so close to Venice (the ferries run all night). I extended my stay from 5 days to 12 and really explored the Island, buying tools from Carlo Dona. having a tour of the Effetre factory, blowing glass at Renzo early on a Saturday. Davide Penzo making beads Igor Balbi blowing vessels on the flame torch. Elena Rossos 'studio , Amy Wests' bead work, Luigi Comozzos' cold working. The Barbini home and gallery. I met some lovely people and made some great contacts I'd like to share with you. I can't wait to get back.

Royal Easter Show – Auckland 2011

Someone is needed to step up and run the glass section of the show. Again it is not onerous but does require coordination leading up to the show and during the show and for the overseeing artists collecting their pieces the day after the show closes. This person need not be an NZSAG person as the show is open to all glass artists. Please get in touch if you are volunteering or wish to discuss anything about the role. Glasspres@gmail.com

New Zealand's Most Comprehensive Range of Art Glass Supplies
"Imported from around the world & distributed to you"

Discounts for NZSAG Members & Trade rates available – call now for your free catalogue

Tollfree: 0800 847 9213

Hot Glass * Cold Glass * Kilns * Tools * Materials * Books * Bevels

Importers of:

Spectrum – Uroboros – Dichoric – Youghioghery – Bullseye – Wissmach – Kokomo

Distributors of:

*Glass Sheets – Rods – Powders – Frits – Billets – Pebbles – Moulds – Chemicals –
Findings – Glues – Shelf Paper – Fibre Board – Grinders – Ring Saws – Glass Kilns*

Leadlight Products (NZ) Ltd

Ph; 07-847-9213 Fax; 07-846 7020 Web; www.leadlight.co.nz

Cnr Norton Rd & Commerce St, PO Box 5198, Frankton, Hamilton.

Email; info@leadlight.co.nz

Shop Hours; Monday to Friday 8.30am – 5.00pm Saturday 9.30am – 12.30pm (excl long weekends)

Stephen Belanger-Taylor – window maker

<http://newzealandglass.blogspot.com/2010/08/passing-of-stephen-belanger-taylor.html>

FRESH – New Work from Waitakere Glass Artists

22nd October – 5th December 2010, Opening October 21st Thursday at 6pm

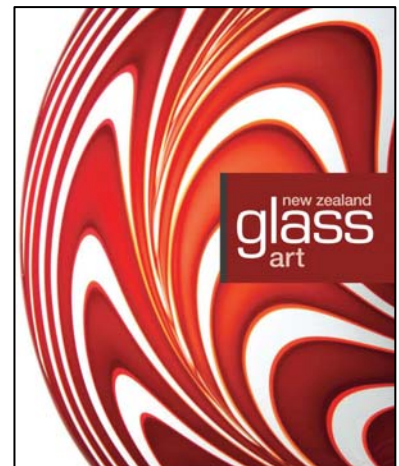
The hunt for talented Waitakere (based or bred) glass artists is on again... This year we are looking for submissions of new work from glass artists who have a link to Waitakere. Show off your innovations and new ideas in our annual exhibition. Works should have been completed in 2009 – 2010 and preferably not have been exhibited before. There is no limit to the amount of work you submit but final selections will be made by the Curator. Please submit images of your work along with some artist info to lisa@ceac.org.nz.

For more information please ring the Curator, Lisa Rogers on 09 838 4455 x203.

End date for Submissions August 27th 2010.

New Zealand Glass Art

The book is at the printers in China and we are expecting to have the preview copies by late August. Already Fishpond are listing the book as coming soon. We will be sending a promotional flyer out with the Conference Brochure so that members can order copies to be collected at the Conference or have them mailed to reach them about the same time. I did a search on the Auckland City Library site and see that copies of the book have already been ordered for 10 Auckland City libraries and expect other libraries will also be ordering. I think it will be a book that many people will want to buy for themselves and for their friends. Artists in the book will get one complimentary copy but are free to order more copies. The book has a RRP of \$49.99 but NZSAG is offering the book at \$38 plus postage.



RE-FRACTION 2010 at the Sculpture Park @ Waitakaruru Arboretum

The Waikato Sculpture Trust is now gearing up to present its annual exhibition of contemporary outdoor glass sculpture, RE-FRACTION.

The Trust has appointed Sarah Anderson to curate this year's event; Anderson has a BFA in sculpture from the University of Canterbury, she has curated two major exhibitions at the Sculpture Park, E: Scape 2009 and 2010 and is a practicing artist.

'I am excited about being given the opportunity to work with glass artists, the medium offers so many challenges for the artists involved including how to create work robust enough to survive in an outdoor environment while remaining true to the delicacy of the medium itself. The exhibition has been running for a few years now and there have been some wonderful examples of artists meeting this challenge, in many cases by collaborating with other sculptors to create works that encompass other mediums; Shona Firman and Graeme Priddle's 'Totems' are an excellent example.'

The Trust is delighted to announce that Swarbrick-Dixon Lawyers are continuing their sponsorship of a student award and an open class award. This will be the fourth year of the awards and we appreciate their continued support in these tough economic times.


The judge has recently been announced as Elizabeth McClure.

Hidden Oxygen Cylinder Rental costs - from Jo Tricker

My oxygen cylinder for flameworking is on rental from Air Liquide. Last month I received an invoice from Air Liquide which had an extra charge on it – something called an 'immobilisation fee'. I rang Air Liquide and spoke to the receptionist who told me it was an extra fee for not having re-filled my oxygen tank in a six month period! (This may not affect many members but I have two toddlers and am studying part time so can sometimes go for two months without using my torch! However - it is something to be aware of in case of illness or an unforeseen event!). I thought this was a bit rank and so went into the local branch where I'd originally signed up and was told that, yes, this was the case. Since November last year I had been paying \$12.38 per month for a G size oxygen tank. (This amount has since gone up to \$15 per month). I'd had my cylinder at home for seven and a half months and hadn't filled it in this time - and so was charged two months worth of immobilisation fees at \$18 per month - totalling an extra \$36. This put my total rental for the last two months at \$30.38 per month!! I told the sales person that on initial sign up I had requested that **ALL** costs be explained to me and that I was very unhappy with this situation. At this point AirLiquide came to the party, refunded the immobilisation fees and advised of another payment option which negated the immobilisation fee – one year hireage at \$168.75 paid in advance. After

doing another round of price comparisons and discovering a huge variation in rental and fill charges, I ended up staying with Air Liquide on the one year hire as it still worked out to be cheaper than the opposition.

People need to be aware of the costs and check that there are no hidden charges and whether the deal you have is the best for your circumstances in your area.



GS traders

Studio resources

Diamond handpads, Diamond sandpaper, Diamond sawblades, Flexible diamond pads, Diamond point sets, Diamond bands, Diamond grinding wheels, Flatbed grinder disks, Grits and polishes, Micro diegrinders, sandblasting guns, Refurbished diamond saws

Greg Swinburne
14A Burnah st
Wanganui NZ 4500
06 343 5611
021 079 9171

Email for more information

GS.traders@hotmail.com

A request for Information

I am about to start building a personal studio for glass casting, and would relish the opportunity to visit other caster's in their studio spaces (however small, large, basic or beautiful!), for ideas on practical layout.

If you are happy to extend an invitation please contact me –di@dicast.co.nz.

Thank you

Di Tocker

Call for Entries

The Corning Museum of Glass invites artists, craftspeople, designers, and architects worldwide to submit slide images of new works using glass.

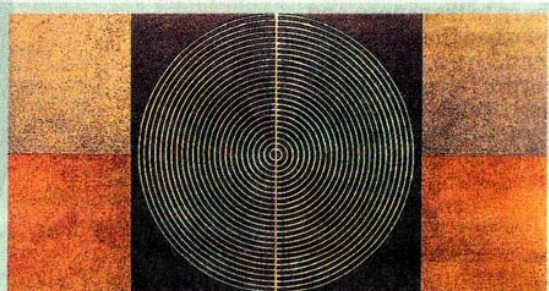
The deadline for submissions each year is October 1. In late November or early December, a jury selects 100 images from the submitted slides. This survey of 100 images, which is the core of *New Glass Review*, is published every spring by The Corning Museum of Glass in conjunction with the German periodical, *Neues Glas* (New Glass).

The *New Glass Review* jury changes every year. It is composed of artists, designers, educators, museum directors, curators, and critics. In addition to the survey of art and architecture in glass, *New Glass Review* contains essays written by its jurors as well as a selection of work in glass ("Jurors' Choice") that has been chosen by each juror. *New Glass Review* is intended to keep its audience, which includes museums, artists, educators, libraries, collectors, critics, and art dealers, informed of recent developments in the field. Although the criteria for selection vary from juror to juror, the success of the concept of the object is judged, as well as its aesthetic quality and technical achievement.

<http://www.cmog.org/dynamic.aspx?id=2632>

In the 2010 Glass Review Te Rongo Kirkwood was the only New Zealander whose work was selected. Perhaps in 2011 we could have more than one.

James Dignan



Waitakere Evening, by Claudia Borella.

PHOTOS: JAMES DIGNAN

▶ "A New Zealand Perspective", Claudia Borella (Milford Galleries Dunedin)

AUSTRALIAN-BORN Claudia Borella is known for fine, semi-abstract glassworks, a deserved reputation if her current exhibition is any indication. Taking inspiration from her home in Wanganui, Borella has produced a series of wall-hangings and canoe forms imbued with an outsider's appreciation for New Zealand land and culture. In them, the bright, harsh colours of the Australian landscape are replaced by the subtle earth greens, browns and aquas of New Zealand.

The strongly geometric wall-hung pieces have been cold-worked to produce calm, analytical art. They are informed by both the minimalist abstractions of the likes of Stella and the op art patterns of Riley. The concentric circles of the central sun motif shimmer and vibrate, an effect amplified by the depth of the glass and the associated change in the works' appearance as the viewer moves around the gallery.

The canoe forms again use this swirled patterning, yet here it is the curved surfaces of the works which are most attractive. Based on a combination of Venetian gondola and Maori waka forms, these pieces have been allowed to slump, the form dictated by gravity during the refining process. There is an irresistible temptation to touch the smooth lines of these wonderful sensual forms.

*'Art Seen', Otago Daily Times,
Thursday, August 5, 2010*

Conservation Supplies

Archival Quality Materials for
Conservation, Restoration, Preservation &
Exhibition

Protect your precious glass works with

QuakeHold Products Gel, Wax and Putty



Removable, reusable
and non-toxic
Clear QuakeHold! Gel
secures

Glass, antiques, collectibles and
more, from falling and breaking.

Comes off clean, works well on Glass and most surfaces.

See website or call for more details

Phone : 09 425 7380 / Fax : 09 425 7385

Email : info@conservationsupplies.co.nz

Web : www.conservationsupplies.co.nz

ROTORUA LAPDIARY ROCK & MINERAL SUPPLIES LTD Est 1981

We stock a comprehensive range of grinding, sanding and
polishing equipment for glass artists.

Stock list includes

- * Lortone grinding & polishing arbours
- * Lortone tumblers
- * Rubber sanding drums
- * Diamond dot sanding discs 100-1000grit
- * Magnetic diamond discs – made to order
By our international manufacturer
- * Power flexi carving machine
- * Silicone carbide sanding belts and discs
- * Diamond sanding belts
- * Diamond sanding banks & mandrels
- * Diamond hand pads
- * Diamond drills
- * Grinding & polishing powders & pastes

Equipment brand names stocked:-

Lortone, Crystalite, Barranca, MK, Inland

www.rotorualapidary.co.nz
email: rotorualapidary@xtra.co.nz
Ph: 07 348 8996
Fax: 07 348 8621

Glass Art Network – ezine

A source of information, contact with other artists etc.

<http://www.glassartnetwork.com/page/homejune>

Aesthetica Creative Works Competition 2010

The Aesthetica Creative Works Competition is now open for entries! Aesthetica Magazine is inviting all artists, writers and poets to submit their work into the Aesthetica Creative Works Competition 2010. Now in its third year, the Creative Works Competition is dedicated to celebrating and championing creative talent across three disciplines, identifying artists and writers and bringing them to international attention.

The Competition has three categories, Artwork, Poetry and Fiction.

- Winners and finalists are published in the Aesthetica Creative Works Annual.
- Winners of each category receive £500 prize money plus other prizes.
- Entry to the Creative Works Competition is £10.
- The entry fee allows the submission of 2 images, 2 poems or 2 short stories.
- The deadline for submissions is the 31st August 2010.
- More guidelines on how to submit can be found online at http://www.aestheticamagazine.com/submission_guide.htm

Taranaki Art Awards Entry

Entries close 14 September 2010

<http://www.taranakiartawards.co.nz/>

Ausglass Conference 2011 Peripheral Vision - The 15th Biennial Conference, Sydney

20th January to Sunday the 23rd January, 2011

For more information go to www.ausglass.org.au

2011 Glass Art Society Conference will be held in Seattle, Washington, June 1-4, 2011. The 2011 conference will also feature a Day of Glass in Tacoma, WA, on Wednesday, June 1, 2011.

JUTTA CUNY-FRANZ AWARD 2011

Conditions for Participation and Application Form

Applications will be accepted from now on until **15 October 2010**. See application form for download <http://www.glassmuseum-hentrich.de/mediabig/2913A.pdf>

The prize is awarded to artists who make significant use of glass in their works

The artists who participate should not be older than 40, and their work (sculptures, objects) should not be older than 2 years. Each participant can present up to three works.

The Jutta Cuny-Franz Memorial Award is endowed with 10000 Euro. Two talent awards are endowed with 1500 Euro each. Awards may be split between contributions of equal rank.

The awards and a number of honorary diplomas are granted every two years. The winners are chosen without possibility of recourse to legal action by a jury, consisting of: Prof. Dr. Christoph Brockhaus, Duisburg, Germany; Prof. Anthony Cragg, Wuppertal, Germany; Prof. Dr. Hermann Fillitz, Vienna, Austria; Dr. Dedo von Kerssenbrock-Krosigk, Dusseldorf, Germany; Dr. Helmut Ricke, Dusseldorf, Germany; Dr. Elisabeth Scheuba, Vienna, Austria.

Prizes will be presented in Spring 2011. The winning contributions and a choice of further applications will be published in the "New Glass" journal

Only complete applications will be accepted Please submit your questions and application to **Jutta Cuny-Franz Foundation**
 Glasmuseum Hentrich, museum kunst palast
 Ehrenhof 4-5, 40479 Dusseldorf, Germany
 Fax: +49 211 892-9173
dedo.krosigk@smkp.de

WANGANUI FESTIVAL OF GLASS



www.wanganuiglass.com

18 SEP - 3 OCT 2010

WANGANUI FESTIVAL OF GLASS

programme of events

September

- 18 **Opening of the Festival**
Guest Speaker: David Trubridge
Hot Glass Demo: Luke Jacomb
- 19 **Hot Glass Demo:** Justin Cullina
Warm Glass Workshop: David Traub
Lectures: Luke Jacomb & David Trubridge
- 22 **Window Display Walk & Talk with Karen Ellett**
Wanganui Glass School Fundraising Sale
- 23 **Cast Glass Workshop:** Jim Dennison & Leanne Williams
Lecture: Jim Dennison & Leanne Williams
Mosaic Workshop: Louise Herdman
Exhibition Opening: Sarjeant Gallery - Wanganui Glass
- 24 **Hot Glass Graal Demo:** Keith Grinter
- 25 **Hot Glass Demo:** Kerry McDonnell & Ben Sablerolle
Glass Olympic Games
Exhibition Opening: Kate Dobbs + Glass Student Show
Night Window Display Walk & Talk with
Katie Brown & Carmen Simmonds
- 26 **Wanganui Glass School Fundraising Sale**

October

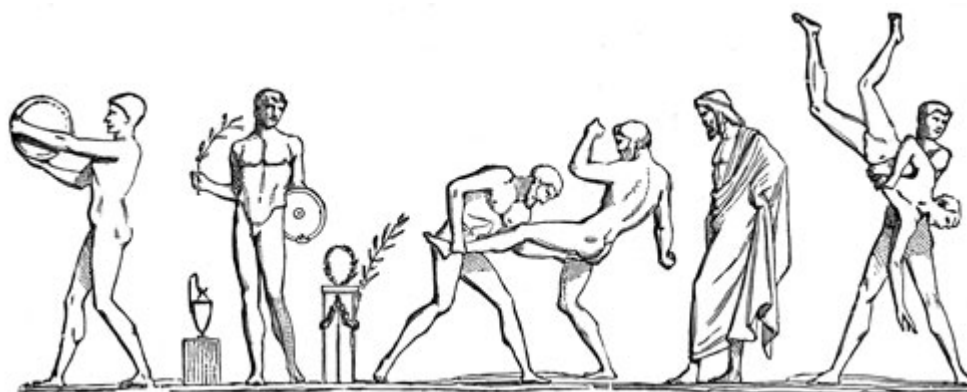
- 2 **Weekend Hot Glass Workshop:** For Beginners
Blowing In The Dark: Student Fundraiser
- 3 **Closing of the Festival**

www.wanganuiglass.com

18 SEP - 3 OCT 2010

GLASS OLYMPIC GAMES

MMX



5 TEAM EVENTS



5 IN EACH TEAM

- I - BIGGEST BLOWN GLASS BUBBLE
- II - LONGEST CANE PULL OF GLASS
- III - TWO LEGGED GLASS BLOWING
- IV - POLISH THE PAPERWEIGHT RELAY
- V - THE ROUNDEST CIRCLE IN GLASS

*This event is part of the Wanganui Festival of Glass
2010*

SATURDAY 25TH SEPTEMBER 2PM – 4PM CHRONICLE GLASS
STUDIO, 2 RUTLAND STREET
Register at Chronicle Glass Studio or info@chronicleglass.co.nz

EXHIBITIONS,

- **Hastings City Art Gallery**

Eastbourne Street East , Hastings

PUTIPUTI: The Flower in Contemporary New Zealand Art

10 Jul - 26 Sept 2010

Mary Ama, Renee Bevan, Linda Bruce, Christine Butler, Madeleine Child & Philip Jarvis, Adam Clarke, **Evelyn Dunstan**, Niki Hastings-McFall, Robert Yahnke, Gaye Jurisich, Andrea Gardner, Sally Lush, Sylvia Marsters, Kim Meek, Koji Miyazaki, Nick Moon, Richard Orjis, Neal Palmer, Reuben Paterson, Tania Patterson, Terrie Reddish, Sally Tagg, David Trubridge, Patrick Tyman, Francis Van Dammen, Layla Walter, Pamela Wolfe

- **Uxbridge Gallery, Auckland**

Exposed 4

(includes a copy of Sue Hawker's Ranamok winning piece).

6 - 26 Aug 2010

- **NZ Steel Gallery** 12 Massey Rd, Pukekohe

Franklin Arts Festival,

Various artists

September 3 to 12

- **RE-FRACTION 2010**

An exhibition of Contemporary outdoor glass sculpture

Venue: The Sculpture Park @ Waitakaruru Arboretum, 207 Scotsman Valley Rd, RD1, Morrinsville

Dates: 2nd October-14th November 2010

- **Corbans Art Centre, Henderson**

New Work from Waitakere Glass Artists

22nd October – 5th December 2010

- **KINGS COLLEGE ART SALE**

5 – 7th November 2010

Golf Avenue, Otahuhu

www.kingscollegeart.co.nz

General Contact : Please feel that you can contact me on any NZSAG business and with comments and/or suggestions for the newsletter. As the newsletter is put out every month the deadline for information etc is 15th of the month. If received after the 15th it will be considered for the following month. I would love to have some information from blowers, fusers and slumpers, stained glass artists, neon artists, architectural glass artists, frameworkers and cold workers as well as others interested in, collecting or working in glass

Brian Chrystall, President, Newsletter Editor,

Mobile 021 02307786

Email : Glasspres@gmail.com

NZSAG, PO Box 68805, Newton, AUCKLAND



Whanganui Excellence in Art Glass

wanganuiglassgroup@gmail.com

Enrolments for The Neighbourhood

[Look out The Crystal Chain Gang are coming to your hood!](#)

This 4-day workshop will be fun filled, high paced, and action packed!!! You will experience first hand the collaborative practice and methods of the Crystal Chain Gang. We will be directing a collaborative project where you will be working in new materials and thinking in new ways with mould making at the core. Producing componentry via kiln formed glass and hot poured glass. We will be concentrating on process, multiples and experimentation as we construct a glass diorama, "The Neighbourhood".

[Thursday 23 September to Sunday 26th September 2010](#)

[9.00am – 4.00pm](#)

Name:

Address:.....

.....

Phone:.....

Fee: \$450.00

Please make cheque payable to: **Wanganui Glass Group**

Payment Received onCheque.....Cash.....

Receipt required Y/N

Applications

Applications are now open and receipt of full payment will secure your place. Applications will be accepted until workshop is full.

Please complete your details and return to:

WGG Casting Workshop

Chronicle Glass Studio

2 Rutland Street

Wanganui