



**nzsag**

New Zealand Society of Artists in Glass Inc.

NZSAG, PO Box 68805, Newton, AUCKLAND



## Newsletter No 9, December 2008

### Presidents Report

#### Seasons Greetings to all NZSAG members and their families.

It is hoped that the festive season will bring a lot of pleasure to all members. This is an impossible wish as we will all know of family and friends who are suffering hardship as a result of a wide range of possible reasons but to all those suffering we extend our sympathies and good wishes and hope that 2009 will see an appropriate outcome for all.

### Constitution Review

On Saturday afternoon (December 6<sup>th</sup>) a small group attended the Special General Meeting to approve the Revised Constitution. Fortunately we had a quorum in attendance and a number of postal votes so that the revised document could be approved. This has been a rather long process but it is pleasing to have it all finalised.

In conjunction with the Special General Meeting we also held a barbeque which was very pleasurable and gave those in attendance a chance to talk with other artists and generally enjoy the fine weather.

### NZSAG Glass Magazine

Although the number who have responded is somewhat disappointing at the time of writing, the committee has decided to progress with the Glass magazine. We are planning an A4 format probably of a quality similar to Artnews. The proposal is that the magazine feature current or recent work from as many NZSAG members as possible with members being able to fill two pages, one, or a half page at \$100 for a full page for which the participants would also get a copy of the "catalogue". Artists who are currently not NZSAG members will be able to participate but only on payment of an extra fee, equivalent to the NZSAG membership fee.

Obviously we will need to get full quotes and clearly define requirements for images etc and then apply to agencies such as Creative New Zealand etc for financial support.

If at this stage you are interested in being part of the project, and have not yet advised me, please email ([GlassArtMag@gmail.com](mailto:GlassArtMag@gmail.com)) or send a response to NZSAG, PO Box 68805, Newton, Auckland. The level of interest will determine the size of the publication. Although I hoped to have all responses by December 15<sup>th</sup> please still send in your response so we can keep the information flowing to those who are interested. If a member (or one of your colleagues) has skills and/or contacts that might assist NZSAG bring this project to fruition please get in touch.

The images supplied will need to be of the same sort of quality specified for Ranamok.

Further information on requirements and timings will be sent out in 2009.



**nzsag**  
New Zealand Society of Artists in Glass Inc.

PO BOX 68805 • NEWTON • AUCKLAND 1145 • NEW ZEALAND • [www.nzsag.co.nz](http://www.nzsag.co.nz)

**ALL Members of NZSAG and Glass Artists Galore get ready for the**

## **NZSAG 2009 Glass Exhibition and Auction**

**To be held on**

**Friday, Saturday and Sunday 10-12 July 2009**

**at**

### **Old St Michaels Church Corban Estate Arts Centre (CEAC)**

**Entrance Mt Lebanon Lane Waitakere City**

**Your invitation to sell works of glass art to help NZSAG raise funds for future projects for its members.**

- 1. By donating (gifting) a piece or pieces**
- 2. 50/50 share between you and NZSAG (you your price or reserve).**

**All information on pricing your work (with an example), packaging requirements, etc will be detailed on the registration forms.**

**Art works can be sent to NZSAG from the 1<sup>st</sup> February onwards. Set-up and hand delivery will be the day prior - Thursday 9 July 2009**

**Contact and delivery address: Ron Reichs**  
176 Forest Hill Rd, Waioata, WAITAKERE 0612

**Email: [Greenglass@xtra.co.nz](mailto:Greenglass@xtra.co.nz)**

**Phone: 09 8149339**

---

**New Zealand Society of Artists in Glass**

Newsletter 9, December 2008

[www.nzsag.co.nz](http://www.nzsag.co.nz)  
[nzsag.blogspot.com](http://nzsag.blogspot.com)

## AUSGLASS Conference

I do not know of any NZSAG members who are planning to attend the AUSGLASS Conference in Tasmania. It looks as if it should be a fun event with some interesting speakers and workshops. If any NZSAG members are attending I would be very keen to have a report, or more than one report, on the conference to share in a future newsletter.

### Conservation Supplies

Archival Quality Materials for  
Conservation, Restoration, Preservation &  
Exhibition

Protect your precious glass works with

#### **QuakeHold Products Gel, Wax and Putty**

Removable, reusable  
and non-toxic  
Clear QuakeHold! Gel  
secures

Glass, antiques, collectibles and  
more, from falling and breaking.  
Comes off clean, works well on Glass and most surfaces.



See website or call for more details

Phone : 09 425 7380 / Fax : 09 425 7385

Email : [info@conservationsupplies.co.nz](mailto:info@conservationsupplies.co.nz)

Web : [www.conservationsupplies.co.nz](http://www.conservationsupplies.co.nz)

### ROTORUA LAPIDARY ROCK & MINERAL SUPPLIES LTD

Est 1981

We stock a comprehensive range of grinding, sanding and  
polishing equipment for glass artists.

Stock list includes

- \* Lortone grinding & polishing arbours
- \* Lortone tumblers
- \* Rubber sanding drums
- \* Diamond dot sanding discs 100-1000grit
- \* Magnetic diamond discs – made to order  
By our international manufacturer
- \* Power flexi carving machine
- \* Silicone carbide sanding belts and discs
- \* Diamond sanding belts
- \* Diamond sanding banks & mandrels
- \* Diamond hand pads
- \* Diamond drills
- \* Grinding & polishing powders & pastes

Equipment brand names stocked:-

Lortone, Crystalite, Barranca, MK, Inland

[www.rotorualapidary.co.nz](http://www.rotorualapidary.co.nz)

email: [rotorualapidary@xtra.co.nz](mailto:rotorualapidary@xtra.co.nz)

Ph: 07 348 8996

Fax: 07 348 8621

## Facets – A Glass Studio

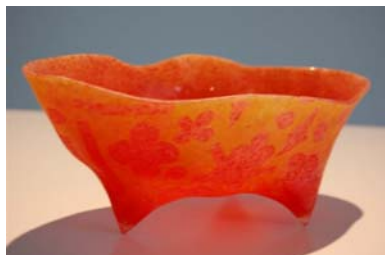
Exhibition by students of the year long course at Art Station

I went along to the opening just to see what the students had produced and was pleasantly surprised by the range and diversity of the works they had on display. All of the works were relatively small but some were absolutely delightful and shown to advantage. The tutors, Nicole Lucas and Jo Nuttal are to be commended on guiding and assisting the students develop their individual styles. Some of the pieces were priced far too low and might suggest to some that there is no reason why cast glass is relatively expensive compared with say blown glass. Other pieces were well priced but may not sell in the somewhat slow market at present. I suspect many will get this too late to be able to get in to see the exhibition but I would encourage those who can to get into ArtStation by December 20<sup>th</sup> to have a look and gain fresh inspiration.

## Artist Profile

### Jenny Judge

It is wonderful being back in New Zealand! I have re-settled in Titirangi with my husband Michael, two children (Seb age 11, Maddie age 17) and our dog (blue Heeler named Indigo). Though it has been difficult leaving the mountains of Vancouver, Canada I am pleased and excited to be thrown back into the vibrant and expanding Glass-Art community here. When our family lived here temporarily in 2002-2004 I took the one-year glass-casting course through Artstation. I remember the words of Nicole Lucas “You have to be careful with glass because it is very seductive”, boy was she right!



What I like about the glass community is that everyone brings to it their own set of experiences and a huge variety in backgrounds and training. I received an MFA in sculpture from the University of Minnesota; this was quite a while ago and I have exhibited everything from outdoor and indoor site specific art installations to



spending a number of years printmaking and working with fabric. I love incorporating glass in my work because it is a medium charged with metaphor, heightened its reflective qualities and has the flexibility of taking on a variety of forms and surfaces; it is also a medium that keeps us humble because of its fragility, and the technical and lengthy processes it demands.

*To move, migration, immigration, emigration:* all are filled with mixed emotions and feelings of being in two places at once. My current work focuses on these feelings and I am using the metaphor of the airplane (departing and arriving) in cast glass, pâte de verre, ceramic, bronze, fabric, knitting (yes, knitted airplanes) and have just starting work towards an installation piece to be exhibited at the Corban Estate Art Centre in Henderson in August 2009. Like most of my installation work I incorporate a multitude of small pieces to create something much larger.

I also work with the vessel form, and I treat these sculptures as characters and approach them with a sense of humour. They are constructed by making molds from found objects that I cast in wax and then assembled. Some of these never make it to the molding/firing stage because they are either too difficult to cast, or simply don't make the cut because they are not interesting enough. I take advantage of the wax making stage- it is like drawing to a painter: It can be highly experimental and a time to push and experiment with form.

I have exhibited work in Canada, the United States, Japan, France and New Zealand. I was an active member and served on the board of the British Columbia Glass Art Association when I lived in Vancouver. My website will be up and running by the end of January [www.jennyjudge.com](http://www.jennyjudge.com) and I can be contacted at: [jtjudge@xtra.co.nz](mailto:jtjudge@xtra.co.nz)

## Artist Profile

Annabel Menzies-Joyce

By Lorraine Natusch



When I asked Annabel for an article on herself for the newsletter she said she doesn't consider herself a Glass Artist, but rather an artist that works in glass among other media. Annabel has a Diploma of Fine Arts from Canterbury University and a Post Graduate Diploma of Landscape Architecture from Lincoln University. She has been exhibiting for over 16 years – initially as a painter, but expanding to include Cast Glass and she has also recently added a printing press and experimenting in Mezzotint.

With her upbringing in an isolated part of Banks Peninsula, she has a passion for remote landscapes with their changing light, massive form and depth of colour. She has explored the

Marlborough sounds, Fiordland, and in January 2007 she visited Antarctica and the sub-Antarctic Island of South Georgia and the Shetland Islands. Her recent works have been inspired by this life changing journey to the Antarctic and the great Explorers of this land.

Annabel discovered Glass Casting at the Christchurch Technical Institute Summer School with Phil Aitken and a further course with Emma Camden. "Glass is such a seductive medium, the light and the colour can be extraordinary," and so it became an expensive obsession.



In her recent solo exhibition of her Antarctic experience at Form Gallery in Christchurch I felt the enormity of the landscape in relation to man and the emotion of the works - The explorer battling the glaciers and Scott encased, as surely he must have felt in those last days.

Annabel's most recent exhibition was at Two Rivers gallery in Cheviot, North Canterbury in conjunction with Llew Summers – who has also branched out to include Cast Glass as a medium

### Royal Easter Show 2009

Entries for the Royal Easter Show close on February 27<sup>th</sup>. We are hoping to have more glass this year and will cater for all types of glass art. The plan is to have a couple of secure cabinets for small pieces such as beads and jewellery as well as plinths for larger pieces. Wall hung pieces will also be catered for. There is a \$1000 first prize and a \$500 second prize. If you do not have information email ([Easterglass@gmail.com](mailto:Easterglass@gmail.com)) and I will get the information to you in January. Delivery of artworks will be 2 and 3<sup>rd</sup> April.

Last year we had a number of volunteers to man the show over the entire Thursday to Monday (9<sup>th</sup> to 13<sup>th</sup> April next year) and will again need a minimum of 10 people. I have had a couple of offers so far but more make life bearable for those involved. Please mail your availability to [glasspres@gmail.com](mailto:glasspres@gmail.com) so I can make a schedule.



## Next Newsletter

At this stage the next newsletter will be February but there is a possibility that I will have an opportunity to put one out in January. Depends on when my daughter has her baby as that might curtail a beach holiday giving me a chance to produce a newsletter. Send in your information, Artist Profiles (300 words and one or two images), info re exhibitions, new opportunities and anything else that you may think your fellow members would like to hear about. If I do not use it in January it will be February,

## MGM Sandblasting – also sandblasts Glass objects for artists.



*Sandblasting Designs On Glass*

AUCKLAND WIDE COMMERCIAL & RESIDENTIAL

Glass vanities and cabinet designs.  
Glass door designs.  
Murals on glass partitions.  
Corporate logos on glasses etc.  
Decorative borders.  
Sandblast shower screens for privacy.  
Sign writing.  
Mirror borders and designs.  
Sandblast your 21st keys or giftware.  
Glassware & glass coasters.  
Glass chess boards.  
Glass vision rolls.  
Glass table tops.  
Glass cabinets and mirrors for boats.  
One-off glass trophies.  
Restoration.

**MGM SANDBLASTING LIMITED**

Phone: 838-3939  
Mobile: 021 238-8740  
Email: sbablast@xtra.co.nz

## INFORMATION AND DIARY DATES

### Small Packages 2008 - Art Gallery, Papakura

This is an annual small works exhibition in the Papakura Art Gallery. Exhibition opens Thursday 27 November 5 – 7 pm runs to 24 December.

**Glass Roots** The Ausglass Conference in Hobart 2009. January 16 to 18, Keep checking the website at monthly intervals or so, as it will change. <http://ausglass.org.au/Conf2009/> NZSAG members can get member rates for the conference. Make sure your registration indicates your NZSAG membership.

Registration form downloadable from [www.ausglass.org.au](http://www.ausglass.org.au).

### Sculpture in the Gardens

Proposals due 28 February 2009. 25 large and medium scale sculptures will be selected. For further info email : [botanicgardens@arc.govt.nz](mailto:botanicgardens@arc.govt.nz)

### Royal Easter Show – Auckland 9<sup>th</sup> to 13<sup>th</sup> April 2009

Advance notice. Please consider exhibiting at the show in 2009.

Information has been sent to artists who are on the Easter Show database but this does not mean others are excluded. If you are interested in getting information please let me know [Easterglass@gmail.com](mailto:Easterglass@gmail.com).

Volunteers to assist will also be required. Last year a few put in a lot of time at the show so it would be good if there were more able and willing to assist.

Entries close 27th February. Email [Easterglass@gmail.com](mailto:Easterglass@gmail.com) if you want to assist.

### **Advertise in the newsletter:**

- Line advertisements in Class News are FREE for members. No more than 80 words please.
- Display advertising rates in 12 issues of newsletter:
  - 1/4 Page \$120
  - 1/2 page \$240
  - Full Page \$400
- Send information to [Glasspres@gmail.com](mailto:Glasspres@gmail.com). The advertisement will appear when the fee has been paid.

## **EXHIBITIONS**

- **James Wallace Art Awards** TheNewDowse (45 Laings Rd, Lower Hutt)  
11th October to 8th of February 2009,
- **FHE**, Kitchener St, Auckland  
October 21 to Dec 22  
Divariacte  
Ann Robinson  
(There was an article in the NZ Herald Saturday November 15<sup>th</sup>)
- **Glass Invitational – Canterbury Museum**  
7th Nov - 8 Feb 09  
Ruth Allen, Jim Dennison & Leanne Williams, Luke Jacomb, Lyndsay Patterson, Elizabeth Thomson, Galia Amsel, Stephen Bradbourne, Evelyn Dunstan, John Edgar, Sue Hawker, Elizabeth McClure, Emily Siddell
- **Artstation – Ponsonby**  
16<sup>th</sup> to 20<sup>th</sup> December . The opening event Monday 15 December from 5pm.  
**Facets** -The Glass Studio  
Selected work by the year long cast glass group, Russell Rix, Stacey Coath, Margaret Murray, Michelle Judge, Karin Barr, David Bullivant, Janet Strode-Penny and Smanatha Vrij, tutored by Nicole Lucas and Jo Nuttal
- **Artstation – Ponsonby**  
4 to 21 February 2009. The opening event is on Tuesday 3 February, 5-7pm.  
**10 years of glass**  
To mark the tenth anniversary of cast glass at Artstation in 2009, we will present an exciting exhibition that celebrates contemporary cast glass at Artstation and in New Zealand, Aotearoa.  
This exhibition will capture this important period in cast glass and the significant contribution that Artstation students have made to the wider arts community. Every Artstation glass student will be invited to submit a work in this exhibition.)
- **Compendium, Auckland**  
National Glass Exhibition –  
December 2 to 24<sup>th</sup>  
Exhibitors include: Allan Gale, Jo Cosford, Sue James, Greg Hall, Adam Sinclair, Hannah Bremner, Brian Chrystall, Emily Lake, Rachel Ravenscroft, Lou Pendergrast-Mathieson, Emma Varga, Jan Kocian.  
Guest exhibitor - Marc Grunseit, Australia

- **Sealink Small Sculpture Prize 2009,**  
Waiheke Community Art Gallery,  
23 January to 15 February.
- **Sabbia Gallery – Sydney**  
January 21, to 21 February 2009  
*Luminaries*  
A group show of recent studio glass work from New Zealand. Including the work of Galia Amsel, Emma Camden, Christine Cathie, Evelyn Dunstan, Robyn Irwin, Ann Robinson + Layla Walter.

**Remember : If you do not tell me what is on it is likely not to be reported.**

### **General Contact**

Please feel that you can contact me on any NZSAG business and with comments and/or suggestions for the newsletter. As the newsletter is put out every month the deadline for information etc is 12<sup>th</sup> of the month. If received after the 12<sup>th</sup> it will be considered for the following month. I would love to have some information from blowers, fusers and slumpers, stained glass artists as well as others interested in or working in glass.

Mobile 021 02307786

Email : Glasspres@gmail.com

NZSAG, PO Box 68805, Newton, AUCKLAND

Brian Chrystall

President

Newsletter Editor