



nzsag

New Zealand Society of Artists in Glass Inc.

NZSAG, PO Box 68805, Newton, AUCKLAND

6

Newsletter No 6, September 2008

Presidents Report

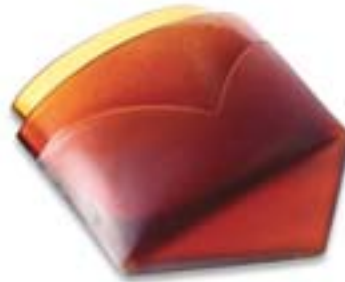
At last I have images and names of the **Ranamok** 2008 Finalists. I have posted images on to NZSAG.blogspot.com but they are also available along with the catalogue from <http://www.ranamok.com/final2008.htm>.

Congratulations to the New Zealand artists who were finalists: The overall winner was Matt Ryan.

Vicki Fanning with “*Teddy Bear*”,



Lou Pendergrast-Mathieson with “*Pocket’s Full*”



Colleen Ryan-Priest with *Antarctic Ice – Untouched World*



There have also been other major Glass Competitions and Exhibitions here in New Zealand. The Whakatane Museum and Gallery hosted **The Molly Morpeth Canaday 3D Awards** featuring Glass. Out of about 47 entries 20 were selected for display and from these prize winners for the major prize and the Creative Excellence awards were selected.

Those selected for exhibition were :

Layla Walter

Leanne Williams and Jim Dennison

Keely McGlynn

Te Rongo Kirkwood

Jan Kocian

Sue Hawker

Stephen Bradbourne

David Traub

Ainsley O’Connell

Hannah Bremner

Robyn Irwin
Stephen Skillitzi
Di Tocker
Lee Brogan
Mike Crawford

Lynden Over
Emma Camden
Rachel Ravenscroft
Christine Cathie
John Penman.



The winner of the \$5000 Overall prize was Lee Brogan with Bombora – a pate de verre piece.



The winner of the \$1000 Creative Excellence Award was Layla Walter with Kokako.

Congratulations to both artists.

The other major event has been **Artworks at the Hilton**. There were 37 artists competing for the Cavalier Bremworth glass award and a further 6 competing for the Glass jewellery prize. There is a great variety of art and there are some stunning pieces of work. I was somewhat disappointed that some of the artists who had originally indicated an intention to submit works did not in the end submit. It would have been great to have even more glass on display. This view was echoed by the marketing manager of Cavalier Bremworth who thought that the prize money would entice more exhibitors and a higher quality.

I was involved assisting with the setup of the glass display and one thing that astounded me was the apparent inability of some artists to follow clear instructions in terms of packaging and delivery of their artworks.

The \$5000 first prize went to David Traub for his “Bowl” and a merit award went to Te Rongo Kirkwood for “Manawapou”. The \$1000 prize for jewellery went to Jenny McLeod for her “Hot Chilli Wall necklace”.

Congratulations.

Conservation Supplies

Archival Quality Materials for Conservation, Restoration, Preservation & Exhibition
Protect your precious glass works with

QuakeHold Products Gel, Wax and Putty

Removable, reusable and non-toxic
Clear QuakeHold! Gel secures

Glass, antiques, collectibles and more, from falling and breaking.
Comes off clean, works well on Glass and most surfaces.



See website or call for more details

Phone : 09 425 7380 / Fax : 09 425 7385

Email : info@conservationsupplies.co.nz

Web : www.conservationsupplies.co.nz

Advertise in the newsletter :

Line advertisements in Class News are FREE for members. No more than 80 words please.

Display advertising rates in 12 issues of newsletter : 1 /4 Page \$120

1/2 page \$240

Full Page \$400

Send information to Glasspres@gmail.com. The advertisement will appear when the fee has been paid.

In an earlier newsletter I mentioned the **Rompala Clause** and its replacement The **Personal Property Securities Register** (PPSR). I have been having a look at the mechanics of the PPSR process which is web based. Getting an user ID is straight forward - go to www.ppsr.govt.nz and follow the get USER ID tab. It is slightly confusing as you seem to have to complete as an administrator then as the Firm for whom you work. However in the main straight forward and there are animated demonstrations of how to do it. (<http://www.ppsr.govt.nz/cms/customer-support/animated-demonstrations>) .

However once you have your ID and want to be able to register an interest in an object you have to create a Secured Party Group before you can register a Financing Statement for each object of interest (over \$2000). I struck a problem trying to create a Secured Party Group as I do not have a fax number. I queried this with MED and they say it is a mandatory field and suggest I use my accountant's, or other known person's Fax number. Rather bizarre. I am therefore currently unable to provide extra info.

If anyone in NZSAG has progressed down this line please let me know so I can inform others. The cost of registering a Financing Statement is \$3 but I suspect the time to ensure all the information is correct including the debtors name etc is considerable. It seems that the PPSR is primarily for items that are traded such as cars, boats etc and is being expected also to cover ART.

Photography Workshop

About 10 people attended the photography workshop run by Howard Williams at Te Rongo Kirkwood's place on a rather cold Sunday morning last month. The workshop covered the basics of photography and especially lighting of glass objects. The workshop was very much a hands-on event. Most of the group had brought along a piece that they wanted to photograph and so were able to experiment with lighting to understand how to get the best photos. Obviously many artists now own digital cameras and think they can just point and shoot on the automatic settings but although this will capture an image it is unlikely to present the object to its best advantage. Understanding the working of the camera and how to set the exposure (aperture and shutter speed) and to focus accurately is essential if you expect the best photographs. It appears that lights need not cost the earth – the halogen lights sold for workshop lighting work well providing you get the white balance correct. The background material can be almost anything – Rongo is using a sheet of vinyl floor covering that has a white backing, White plastic sheeting or even new newsprint (it tends to yellow with time and exposure to sunlight). Diffusing filters made with no 8 wire and Jet fabric (from Industrial Textiles).

Although I doubt it will make all the participants into expert object photographers they will now be more critical about their own photographs and those that they see in magazines and art books. If there is sufficient interest we may run another workshop later in the year.

Glass Catalogue

Planning is underway on the committee's idea to publish what could be called a Glass Year Book. Our idea is to publish a catalogue of New Zealand Glass Art featuring as many of the country's glass artists as possible. Obviously it is not going to be a simple task and we need to develop the concept further to get some costings before we can advance with chasing sponsorship or knowing what artists will need to pay to have their work included, If there are artists with graphic design and publishing skills who might like to be involved in the project please get in touch. Also if you have ideas as to who might be persuaded to stump up monies to fund the exercise please get in touch. As we will need good quality photographs we may have to have nominated photographers in various areas who can be used if an artist feels that they cannot produce the required quality images.

Auction09

The Committee is also planning for the Glass auction to be held in July 2009. The biennial auction helps fund the biennial conference and keep individual costs as low as possible. This is really just an advanced notice that the Auction09 is planned for mid July 2009. Details will be notified in newsletters as they emerge. Please keep this in mind as you produce pieces over the coming months.

AVINKI

Some of you will have had an email from Avinki and wondered whether it was a scam or what. Paul Ashcroft, the CEO of Avinki has just become a member of NZSAG and has also provided some information (see later) in which he outlines what his company is doing for Glass Artists.

PRO-BONO LEGAL SERVICE in Auckland

MGF Webb is an Auckland-based law firm that offers a pro-bono service for emerging artists. From midday to 2 pm on the first Tuesday of each month, they run their Emerging Artists' Scheme. At these times, artists may visit their offices down at the Viaduct for pro bono advice on legal matters to do with their art. Artists can include painters, photographers, writers, actors, musicians and film producers.

Sometimes after one of these visits it is apparent that further legal work is required. MGF Webb are happy to handle this within their firm, or they can refer artists to experienced lawyers in other law firms that can provide the necessary assistance.

If you wish to come along, please give them a call in advance on +649 970 4100 or send them an email at info@mgfwebb.com. Also, see their website for further details (www.mgfwebb.com).

Contact: If you wish to come along, please give them a call in advance on +649 970 4100 or send them an email at info@mgfwebb.com. Also, see their website for further details (www.mgfwebb.com).

New Members

It is pleasing that as well as some previous members renewing subscriptions we have some new members. Welcome to :

Graeme Hitchcock	Huntly	Uxbridge Art Centre	Auckland
Stephen Brodribb	Hamilton	Avinki – Paul Ashcroft	Wellington
Dr Sue Truman	Nelson		

If any of you provide me with a short profile (ideally no more than 300 words) and a couple of images I can profile you in the newsletter so that others know who you are and what you do. To me the organization should be about being a community of artists prepared to help others to further develop glass art.

ALERT:

It has come to the committee's attention that a person is trying to claim on insurance for glass art stolen from his property. It has been revealed that the glass that is trying to be claimed upon was stolen (some 20 years ago) by the person making the claim now. Please be wary of any emails that come your way asking for a valuation of glass art claiming to be stolen, and contact the committee if you are unsure, as we have the name of the person doing this scam.

AVINKI, a registered New Zealand company focused on representing New Zealand artists initially in Asia and in particular Hong Kong and mainland China, is offering art glass artists the opportunity to register their interest in an international art showcase in Hong Kong Jan 2009 featuring New Zealand art glass.



More Than An Art Showcase!

The key to success in Asia is relationship building. For this reason we will be in Hong Kong for 2-3 weeks in October networking and meeting with prospective art buyers and getting feedback on the artwork they are interested in. We will then be in Hong Kong for 4-5 weeks from the end of Dec through to the end of January where we will be personally unpacking and presenting your art at the showcase. The showcase will run for 3 weeks at the New Zealand focus centre where we will host special events as well as one on one appointments for prospective clients to view and purchase your art. All purchases will be 'red stickered' until the end of the showcase. We are also tying in with a world expo of original luxury items where buyers come from all around the world. This gives us the opportunity to give them "a taste" of New Zealand art and direct them to the more formal viewing of our showcase.

We have sent out some emails to artists we have had information on, but if you have not heard from us then please feel free to contact us!

What we require from you is a registration of interest - just email us at glassartist@avinki.com

We need to put together a portfolio that represents you and your work (In the first instance we ask that you email it to us or send it on a CD) that we can show to prospective clients.

The Showcase 2009

Art for the showcase will be required by the 2 Dec 2008 for special packaging and freighting. We are having special packaging made to 'special care international freighting standards'. Once we take delivery of the art it is fully insured by us until it is sold or returned to you. We will PERSONALLY oversee all packaging of art in New Zealand and unpacking in Hong Kong.

The Avante Garde Hong Kong Showcase 2009 is the first of many initiatives we have planned to showcase New Zealand Art. It is our intention to hold showcases every 3-6 months of New Zealand art in Hong Kong initially and then in Mainland China. NZTE have plans to open 5 more centres through out Mainland China over the next 12-18 months.

OUR PASSION

Whilst New Zealand galleries are able to promote and market artists in New Zealand, it is difficult for the artist to take the next step in terms of establishing an international reputation. It takes time, energy and substantial financial resources to enter overseas markets. It then becomes a balancing act for the artist to create the art for the show whilst logistically trying to prepare and finance the preliminary arrangements necessary. We are here to help.

As the business progresses we will be developing a programme for acknowledging and rewarding artists that have worked with us. There will also be opportunities for study grants and new work grants. We want to be very supportive both in terms of established artists developing new work and techniques as well as helping emerging artists reach the international threshold.

Our beliefs are: **INTEGRITY - COMMITMENT – HARMONY**

Who are we?

Paul Ashcroft- Avinki CEO and International Relations Manager

Paul Ashcroft comes from a business development and project management background. He has been nationally recognised in an entrepreneurial business venture competition held by Auckland University and financial firm McKinsey & Co. His business venture finished in the final 7 from a field of 2,000 entrants including Crown Research Enterprises.

Paul has the skills to liaise and network with key international and corporate customers. He also has the project management skills to understand and manage issues such as international export logistics.

Angela Gaultier- International Marketing Manager

Angela Gaultier has a BCA from Victoria University in Business Administration and Marketing. Furthermore she has completed post graduate studies in Strategic Corporate Planning and International Marketing.

Angela has 5 years work experience with an international market research company as well as several years commercial experience with Asia. Since then Angela has been working as a branding specialist and a new business development manager for an international company. Angela brings to Avinki the understanding and overview to seek out new market opportunities as well as the business background in Asia.

Artist Profile

Lee Brogan: Profile (see Bombora image above)

Born in Takapuna, Auckland with a background in commercial art, graphic design and publishing, I am self-employed, as publisher of a national magazine and have a charter yacht business with my partner Paul. We lived on our yacht “Sea Eagle” for five years and travelled extensively in the Pacific, and I am a keen diver and snorkeler with much of my work being influenced by the marine environment.

We have two children aged 13 & 6, and we live on a lifestyle block in Whangaroa in the far north, about 40 minutes drive north of Kerikeri. My studio and office are off the back of our house, I have an ancient kiln, no running water or insulation, but I work entirely from home, which I love. I completed my Bachelor of Applied Arts in 2007, having studied part-time with Northtec at their Kerikeri campus, taking glass/sculpture with Marea Timoko and ceramics with Richard Parker.

I am particularly focused on environmental and political issues, as well as larger universal truths, spirituality and the link between mind and matter. Intensely interested in the conceptual side of art, and sculpture in particular my work is ideas driven, and the materials are chosen to match the idea.

So currently I work in glass, both cast and pate de verre, ceramics and mixed media, and I try to create an object that is not just interesting in and of itself but has deeper layers of meaning that can be revealed to those interested. Although my work can have a serious side I like to temper this with humour, and the juxtaposition of the expected with the unexpected, being heavily influenced by Surrealism of the 1930s.

I had early success when my work “Save the Snails Guadalcanal Œ45” was selected for Ranamok 2005, and a later piece in the series “Caution: Live Shells” made it into the COCA: Anthony Harper

Awards. I have produced a booklet linking poetry with individual works in the series, but have been unable as yet to get it printed, if anyone is interested it is currently available in pdf format.

In 2007 "Scientific Sushi" (my body of work concerned with whaling) gained some success and was included in the Bombay Sapphire Blue Room exhibitions and one of my ceramic sculptures was chosen as a finalist in the Portage Ceramic Awards.

This year I was thrilled when a piece from my new body of work ³Bombora² on the Molly Morpeth Canaday Glass Award, with a welcome cash injection to enable me to continue in my own direction. One of my pieces in the series was also selected as a finalist in Wallace Awards this year. On September 19th I am participating in a group showcase of far north glass artists that will be opening at the gallery at Te Papa, Wellington. Anyone interested in my work can check out my website at www.leebrogan.com, or contact me at lee@leebrogan.com

Seeking cold working facilities

I am a Christchurch based artist working with kiln cast glass. I am **looking for** cold working facilities, particularly a medium to large lapidary grinding machine for finishing. If you know of any facilities for loan or hire, or have any tips on where to look, I would love to hear from you. Am also able to trade for use of a large (15 cu ft / 50x70x110 cm) frontloading casting / pottery kiln.

Please contact me at contact@christinarivett.com if you can help. Thanks - Christina Rivett

Seeking access to kiln for fusing and slumping

Cos Clark is seeking access to a kiln for his fusing and slumping. If anyone can assist please contact Cos directly 09 443 7737. North Shore, Auckland would be first preference but Auckland generally would be OK.

MGM Sandblasting – also sandblasts Glass objects for artists.

Sandblasting Designs On Glass

AUCKLAND WIDE COMMERCIAL & RESIDENTIAL

- Glass vanities and cabinet designs.
- Glass door designs.
- Murals on glass partitions.
- Corporate logos on glasses etc.
- Decorative borders.
- Sandblast shower screens for privacy.
- Sign writing.
- Mirror borders and designs.
- Sandblast your 21st keys or giftware.
- Glassware & glass coasters.
- Glass chess boards.
- Glass vision rails.
- Glass table tops.
- Glass cabinets and mirrors for boats.
- One-off glass trophies.
- Restoration.

MGM SANDBLASTING LIMITED

Phone: 838-3939
Mobile: 021 238-8740
Email: sbablast@xtra.co.nz

INFORMATION AND DIARY DATES

ARTauckland 2008

Entries close 28 September, Entry forms from <http://www.aucklandeastarts.co.nz/> or contact Les Turnball (09 521 3750) or John Towers (09 520 1700).

Waikato Sculpture Trust is holding **re:raction**, its outdoor glass sculpture exhibition at Waitakaruru Sculpture Park from 4th October - 16th November 2008.

Wanganui Festival of Glass - Celebrating glass art September 19th– October 5th 2008



Glass Roots The Ausglass Conference in Hobart 2009. January 16 to 18, Keep checking the website at monthly intervals or so, as it will change. <http://ausglass.org.au/Conf2009/>

Small Sculpture Prize \$3000

Submissions invited for the SeaLink Small Sculpture Prize. Free standing or wall sculpture up to 800mm in any dimension. Closing Date 17 October.

www.waihekeartgallery.org.nz

National Glass Exhibition

December 2 - 24

Guest Exhibitor: Marc Grunseit.

Compendium Gallery will be hosting its annual National Glass Exhibition.

If interested in submitting pieces, please Email images to:

pamela@compendiumgallery.com. The opening preview will be on Monday, December 1st.

Pieces will need to arrive at the Gallery 5 Lorne St. Auckland, 1010 by Saturday, November 29th, 4.00pm.

A copy of the Exhibition Policy and Agreement can be forwarded on request.

Sculpture in the Gardens

Proposals due 28 February 2009. 25 large and medium scale sculptures will be selected.

For further info email : botanicgardens@arc.govt.nz

EXHIBITIONS

- **James Wallace Art Awards** Aotea Centre , Auckland
2nd to 28th September 2008,
- **James Wallace Art Awards** TheNewDowse (45 Laings Rd, Lower Hutt)
11th October to 8th of February 2009,
- **Whakatane District Museum and Gallery**
August 23rd to 28th September
Molly Morpeth Canaday 3D awards
- **AVID Gallery**, Victoria St, Wellington
16 to 27th September
Stephen Bradbourne
Botanical
- **Beaver Galleries, Canberra, Australia**
4 - 22 September, 2008
Solo exhibition -Claudia Borella
Land of the Long White Cloud
- **Waiheke Community Art Centre**
5 – 29 September.
Re-Produce
Julie Baverstock, Ross Mitchell-Anyon, Emily Siddell, Jim Dennison and
Leanne Williams, Merryn Jones, Andy Kingston, Elizabeth McClure
- **Remuera Gallery**
12th – 26th September
Glass Forest
Evelyn Dunstan & Tui Hobson
- **Masterworks Gallery Ponsonby**
18 Sep 08 - 8 Oct 08
New work from New Zealand glass artist Mike Crawford.
Preview Wednesday 17 September from 5.30pm
- **Masterworks Gallery Ponsonby**
18 Sep 08 - 8 Oct 08
New work by Australian glass artist Tom Moore.
Preview Wednesday 17 September from 5.30pm
- **ArtsPost**, 120 Victoria St, Hamilton
25th of September to 27th of October 2008
Casting Concepts: New glass from Colleen Ryan-Priest, John Taris and Di
Tocker.
- **Letham Gallery**, Ponsonby
31 October to 14 November
Interwoven Threads
Jenny McLeod and Daniella Hulme
- **Waitakere Trust Art Awards and Lincoln Green Sculpture Awards**
1st–10th October 2008
Unitec, Ratanui St, Henderson
- **OBJECTive Art Awards 2008**
27 September to 2 November - Awards night Friday 26 September at 7pm,
Nathan Homestead, 70 Hill Road, Manurewa

- **FHE**, Kitchener St, Auckland
October 21 to Dec
Divariacte
Ann Robinson
- **Ferner Gallery** – Parnell
Oct 1 to 19th
Molten: Hot glass and molten metal.
- **Glass Invitational** - opening at the Canterbury Museum 6th Nov
7th Nov - 8 Feb 09
- **NZ Sculpture OnShore 2008**
November 6 until November 16. Fort Takapuna Historic Reserve in Devonport
- **Artstation – Ponsonby**
16th to 20th December
The Glass Studio
Selected work by the year long cast glass group tutored by Nicole Lucas and Jo Nuttal
- **Te Papa Store**, Wellington
Sept 19 to October 19.
Far North Glass Showcase
Featuring Kathy Goodhue, Erana Hohepa, Lee Brogan, Gail Edmonds,
Donna Feary, Sue Hawker, Kay McGowan, Gill Brooks, Jaymz Edmonds,
- **Milford Gallery**, Dunedin
Oct 23 to Nov 21
“I Am .. Pakeha”
Sue Hawker.
- **Michael Chrisp Gallery, Tairawhiti Museum, Gisborne**
Susan Louie
Harvesting the Happy Heart
Solo Exhibition, Cast glass and mixed media
October 2008
Supported by the Chinese Poll Tax Heritage Trust

General Contact

Please feel that you can contact me on any NZSAG business and with comments and/or suggestions for the newsletter. As the newsletter is put out every month the deadline for information etc is 12th of the month. If received after the 12th it will be considered for the following month. I would love to have some information from blowers, fusers and slumpers, stained glass artists as well as others interested in or working in glass.

Mobile 021 02307786

Email : Glasspres@gmail.com

NZSAG, PO Box 68805, Newton, AUCKLAND

Brian Chrystall
President
Newsletter Editor